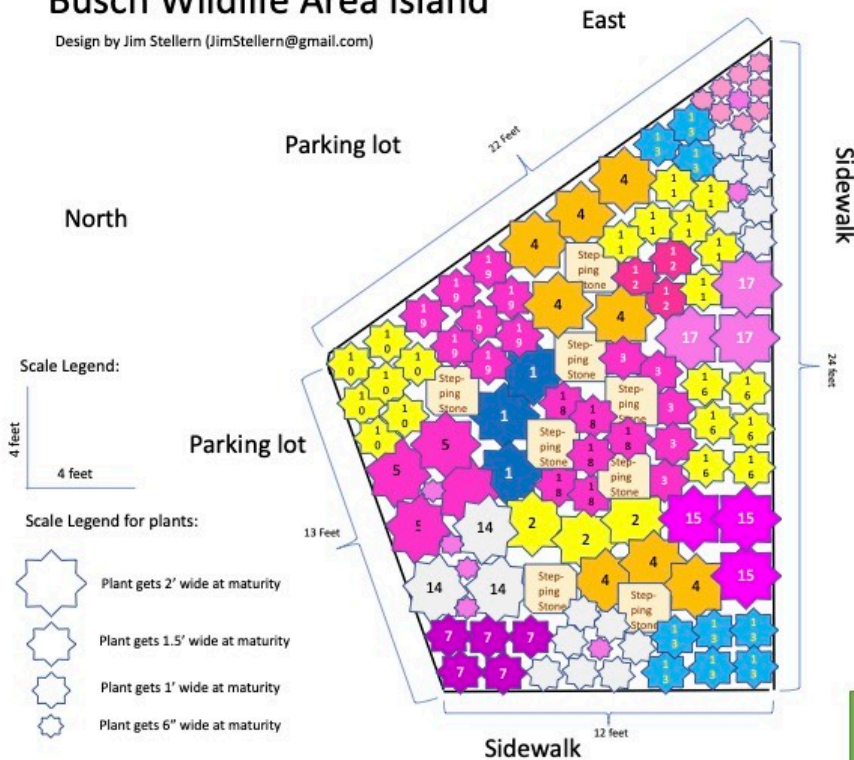


Something New at Busch!

Jim Stellern is new to Native Gardening, but has done lots of research to construct a pleasing design for us WildOnes to use on Island C5, just north of the Jim Tom Blair Building at Busch Conservation.

Busch Wildlife Area Island

Design by Jim Stellern (JimStellern@gmail.com)



Plants selected based on following criteria:

- Can handle significant sun and dry soil
- Attracts butterflies and pollinators
- Low maintenance
- Non-flopers (Liatris being the exception)
- Not too tall (only 1 wildflower over 3' tall)

Plant list: (flowering months, height, width)

1. Blue Wild Indigo(*Baptisia australis*) F May-June; 3' H; 2' W
2. Yellow Wild Indigo(*Baptisia sphaerocarpa*) F May-June; 2-3' H; 2' W
3. Pale Purple Coneflower(*Echinacea pallida*) F June-July; 2-3' H; 1-1.5' W
4. Butterfly Milkweed(*Asclepias tuberosa*) F June-Aug; 1-2' H; 1-2' W
5. Rose Verbena(*Glandularia canadensis*) F April-May; 6" H; spreading
6. Barbara's Buttons(*Marshallia caespitosa*) F May-June; 1' H; 6" W
7. Purple Beardtongue(*Penstemon cobaea*) F June-July; 2-3' H; 1-1.5' W
8. Thimbleweed(*Anemone virginiana*) F May-Aug; 1.5-2' H; 1' W
9. Fall Glade Onion(*Allium Stellatum*) F Aug-Sep; 15" H; 6" W
10. Lanceleaf Coreopsis(*Coreopsis lanceolata*) F May-June; 1-2' H; 1-1.5' W
11. Yellow Coneflower(*Echinacea paradoxa*) F June-Aug; 2-3' H; 1-1.5' W
12. Bottlebrush Blazing Star(*Liatris mucronata*) F July-Aug; 2-3' H; 1.5' W
13. Southern Prairie Aster(*Eurybia hemispherica*) F Aug-Sept; 1-1.5' H; 1.5' W
14. Foxglove Beardtongue(*Penstemon digitalis*) F May-June; 2-3' H; 2' W
15. Purple Poppy Mallow(*Callirhoe involucrate*) F June-July; 6" H; 2-3' W
16. Longhead Coneflower(*Ratibida columnifera*) F June-Sept; 2' H; 1-1.5' W
17. Hairy Wild Petunia(*Ruellia humilis*) F June-Sept; 1' H; 1-2' W
18. Prairie Blazing Star(*Liatris pycnostachya*) F July-Aug; 3-4' H; 1-1.5' W
19. Purple Prairie Clover(*Dalea purpurea*) F June-Aug; 1-3' H; 1-1.5' W

Busch Wildlife Building

As you can see, his design includes 111 different plants, clumped together to make a bold statement from April to October. (Names and numbers of plants required are listed in larger print on the following page.) Our hope is to introduce the public to these generally well behaved natives and to encourage people to use them in their own yards.

The St. Charles Area WildOnes will begin digging up the plants currently in the island on March 15, and hope to smother the area with layers of newspaper and cardboard which will remain in place throughout the summer. We plan to begin planting this fall and are encouraging our WildOnes Members to donate a few of them to this worthy cause.

Common Name	Scientific Name	Number of Plants
1.Blue Wild Indigo	Baptisia australis	3
2.Yellow Wild Indigo	Baptisia sphaerocarpa	3
3.Pale Purple Coneflower	Echinacea pallida	4
4.Butterfly Milkweed	Asclepias tuberosa	7
5.Rose Verbena	Glandularia canadensis	4
6.Barbara's Buttons	Marshallia caespitosa	8
7.Purple Beardtongue	Penstemon cobaea	7
8.Thimbleweed	Anemone virginiana	14
9.Fall Glade Onion	Allium Stellatum	7
10.Lanceleaf Coreopsis	Coreopsis lanceolata	7
11.Yellow Coneflower	Echinacea paradoxa	7
12.Bottlebrush Blazing Star	Liatris mucronata	3
13.Southern Prairie Aster	Eurybia hemispherica	9
14.Foxglove Beardtongue	Penstemon digitalis	3
15.Purple Poppy Mallow	Callirhoe involucrate	3
16.Longhead Coneflower	Ratibida columnifera	6
17.Hairy Wild Petunia	Ruellia humilis	3
18.Prairie Blazing Star	Liatris pycnostachya	6
19.Purple Prairie Clover	Dalea purpurea	7
	Total	111

