

## Meet the 2021 Landscape Challenge Winners from St. Charles Area WildOnes



We are pleased to announce that the 2021 Landscape Challenge winners for WildOnes St. Charles Area are Kelly and Derek Joseph. The Joseph's are native enthusiasts with a large front yard perfect for a landscape design highlighting the beauty and use of natives.

The Landscape Challenge is a yearly undertaking sponsored by Grow Native!, the educational branch of the Missouri Prairie Foundation and by WildOnes Chapters across Missouri. This is the second year that the new St. Charles Area Chapter has participated in this wonderful project. Patty and Steve Barry served as the project chairs this year. They worked with President, Beka Davis and Grow Native Representative Sue Leahy to guide the committee through the steps of advertising the challenge, accepting applications, judging and deciding on a winner based on available information, a "drive-by" viewing and a number of interviews.

Kelly and Derek Joseph have lived in their St. Charles home for four years. This is their first home, which is located in a typical suburban neighborhood on a 0.3 acre corner lot. The lot was previously landscaped using many ornamental non-natives (including some highly invasive species) such as Japanese maples, boxwoods, Callery pear trees, burning bush, Japanese honeysuckle, Chinese silvergrass, Japanese yew, and more. After reading Doug Tallamy's *Bringing Nature Home* in Spring 2020, Kelly was inspired to improve their landscape and bring more wildlife to their yard. The first step was removing four mature Callery pear trees. Removing these trees provided lots of sunny areas to start a pollinator garden and add native trees and shrubs. Since removal of the pear trees, Kelly and Derek have added two Downy Serviceberries, a Northern Red Oak, Nuttall Oak, Eastern Redbud, Chickasaw plum, Arrowwood viburnum, three American Beautyberries, two spicebush, wild hydrangea, and approximately 50 species of native perennial plants.

Through Doug Tallamy's aforementioned book, Kelly read about a Kirkwood, MO couple who converted their yard to natives and discovered the St. Louis Audubon Society's *Bringing Conservation Home Program* (<https://stlouisaudubon.org/bch/>). The couple had their home evaluated by the program in October 2020, which helped immensely with prioritizing the removal of additional invasive species and offering native landscape design advice. Part of that advice included adding water sources for the birds and other wildlife. The Joseph's have since added a water fountain, heated bird bath, and three other water sources throughout their property.

In addition to landscaping their own yard, Kelly volunteered to plant and maintain native perennials in their neighborhood's cul-de-sac roundabout in front of their home. Thus far, eight native species have been planted in the roundabout.



The “before” photo of the Joseph home shows the front area chosen for a make-over. The family had just moved a number of Callery pears and were preparing to plant two front areas with natives, so preparation time was forgone. A small tree and larger shrub were removed from the planting area.



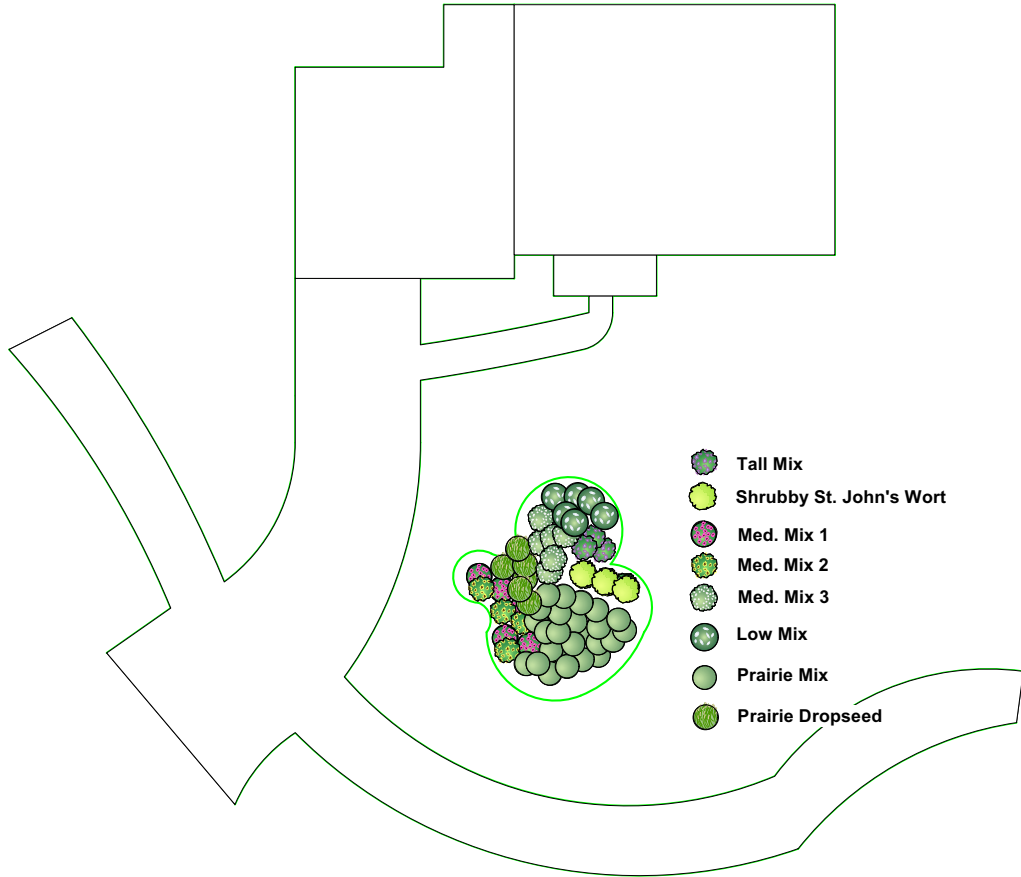
Pat Mahon from Pure Air Natives nursery in Wentzville Missouri volunteered to serve as our Landscape Designer and began working with the Joseph family to develop a native garden design which consisted of a variety of prairie and meadow plants for the full sun site.

The design is shown on the following page and was integrated with native plants that Kelly had already planted in the area.



## Native Landscape Challenge

2717 Sunny Meadows Dr.  
St. Charles, MO 63303



- Tall Mix:** Swamp Milkweed, New England Aster, False Blue Indigo, Greyheaded Coneflower, Riddell's Goldenrod, Shining Blue Star, Big Bluestem x 2
- Med. Mix 1:** Purple Coneflower, Smooth Beardtongue, Wild Bergamot, Little Bluestem x 2
- Med. Mix 2:** Orange Coneflower, Clustered Mountain Mint, Butterfly Milkweed, Little Bluestem x 2
- Med. Mix 3:** Cardinal Flower, Joe Pye Weed, Prairie Milkweed, Aromatic Aster, Sideoats x 2
- Low Mix:** Blue Lobelia, Hairy Petunia, Wild Columbine, Tollway Sedge x 2
- Prairie Mix:** Missouri Primrose, Wild Quinine, Prairie Blazingstar, Hairy Petunia, Pale Purple Coneflower, Grass-Leaved Goldenrod, Blue Grama x 2



Saturday, September 25, was the day chosen for the installment of the new native garden. Pat Mahon and Beka Davis delivered the plants at 7:30 a.m. and WildOnes Volunteer members, Donna Horsford and JoAnn Shew helped Beka, Pat, and Kelly Joseph with the installment. Mary Meinhardt took photos.



Designer, Pat Mahon setting out the design and overseeing the area to be planted.



Pat Mahon, explaining the design to homeowner, Kelly Joseph and to volunteer, Joann Shew.





Designated areas were outlined for the places where the new plantings will go.



Partially finished, with some major digging yet to do.



Cooperation and Getting it done





Finished ! With a “Dirty Hands” Shot! And a Happy Home-owner!



The winners, Kelly and Derek Joseph with baby , Everett, are shown here with Patty and Steve Barry who will be their mentors and who were also the 2021 Landscape Challenge Chairs. The Joseph’s plan to continue transitioning their yard to a native landscape and hope to inspire others in their neighborhood to do so as well. Their gardens will be on display in September 2022 for the St. Charles Area WildOnes Garden Gathering.

Our new WildOnes Landscape Challenge Winner Sign was presented to the Joseph family on October 28, 2021. The recently printed sign features our new logo designed by Beka Davis, our chapter webpage, and the Grow Native sponsor for our WildOnes Challenge.

